



 www.aquametro.swiss

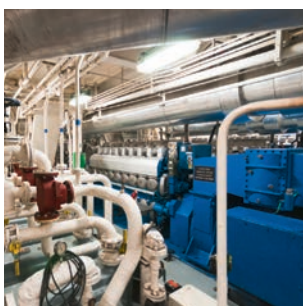
**aqua
metro**

everything that counts



CONTOIL® VZF II

Fuel oil meter with mass flow calculation



Fuel Management is one of the hottest topics since many years. Registration of Fuel Consumption is required for environmental and efficiency purposes. The new CONTOIL® VZF II flow meters with integrated temperature sensor, provides for temperature compensated flowrate and calculated MASS-FLOW.

Features

- Integrated temperature sensor
- Mass & Massflow calculation
- Optional linearization
- Volume compensation
- “auto” detection of medium change

Benefits

- Multiple signals
- Comparable to Coriolis meter
- Increased full range accuracy
- Easier cable connection

CONTOIL® VZF II

Fuel oil meter

Specifications



Type		VZF(A) II 15	VZF(A) II 20	VZF(A) II 25	VZF(A) II 40	VZF(A) II 50	
Nominal diameter	DN	mm	15	20	25	40	50
		inch	1/2	3/4	1	1 1/2	2
Installation length		mm	165	165	190	300	350
Nominal pressure with threaded ends	PN	bar	16	16	16	16	16
	with flanges	PN	bar	25	25	25	25
Maximum temperature	T _{max}	°C	130, 180				
Maximum flow rate	Q _{max} ¹⁾	l/h	600	1500	3 000	9 000	30 000
Continuous flow rate	Q_{cont}¹⁾	l/h	400	1000	2 000	6 000	20 000
Minimal flow rate	Q _{min}	l/h	20	40	75	225	750
Approx. starting flow rate		l/h	4	12	30	90	300
Max. permissible error			±1 %, (A) ±0.5 % of actual value				
Repeatability			±0.2 %, (A) ±0.1 %				
Safety filter mesh size		mm	0.400	0.400	0.400	0.800	0.800
Dirt filter mesh size		mm	0.100	0.100	0.250	0.250	0.250
Volume of measuring chamber		approx. cm ³	12	36	100	330	1200
Housing finish			enameled red RAL 3013				
Weight	with threaded ends ²⁾	approx. kg	2.2	2.5	4.2	17.3	–
	with flanges PN 25	approx. kg	3.8	4.5	7.5	20.3	41.0
Smallest readable amount:							
Total volume		l, m ³ , G	Up to 3 decimal places (dynamic)				
Total Mass		kg, t, lb	Up to 3 decimal places (dynamic)				
Digital flow rate display		(l, G, m ³ , kg, t, lb) / (s, min, h)	Up to 3 decimal places (dynamic)				
Registration capacity		l, m ³ , G	8 digits				
Registration time at Q _{cont} (m ³) until overrun			>100 years				
Outputs							
Three (2 pulse/freq., 1 4...20 mA)			freely selectable outputs are available, totally independent of each other.				
Pulse value for totalizer			Volume or Mass pulse 0...200 pulse/sec. (50 % duty cycle)				
Current 4...20 mA for flowrate			Volume flow, Mass flow or temperature signal to 4...20 mA				
Frequency for flow			Volume flow, Mass flow or temperature signal to frequency 0...200 Hz (50% duty cycle)				
Limiting switch		Q _{min} , Q _{max}	minimum, maximum and hysteresis parameterized				
State switch		Alarm, Error	state and on/off parameterized				

1) For burners and engines or motors, the meter must be selected on the basis of the continuous flow rate (only differential measurement).

For higher viscosities, or if the meter is installed on the suction side, the pressure drop and any reduction in the measuring range must be taken into consideration.

2) Weight without couplings.

SWITZERLAND:

Aquametro AG, CH-4106 Therwil

Aquametro SA, CH-1800 Vevey
Aquametro AG, CH-6929 Gravesano
bil24 AG, CH-8306 Brüttisellen

info@aquametro.com

info@aquametro.com
info@aquametro.com
info@bil24.ch

www.aquametro.com

www.aquametro.com
www.aquametro.com
www.bil24.ch

BELGIUM:

Aquametro Belgium SPRL, B-1933 Sterrebeek

info.amb@aquametro.com

www.aquametro.be

CHINA:

Aquametro (China) Pte Ltd., Singapore 757516

info.china@aquametro.com

www.aquametro.com

GERMANY:

Aquametro Messtechnik GmbH, D-28329 Bremen
Aquametro Marine GmbH, D-18119 Rostock-Warnemünde

info.amd@aquametro.com
info.marine@aquametro.com

www.aquametro.de
www.aquametro.de

INDIA:

Aquametro Representative Office, Mumbai 400053

info.india@aquametro.com

www.aquametro.in

JAPAN:

Aquametro Representative Office, Tokyo 152-0031

info.japan@aquametro.com

www.aquametro.jp

KOREA:

Aquametro Korea Ltd., Busan 612-857

info.korea@aquametro.com

www.aquametro.kr

SINGAPORE:

Aquametro (S.E.A.) Pte Ltd., Singapore 757516

info.singapore@aquametro.com

www.aquametro.sg

UAE:

Aquametro ME JLT, Dubai / UAE

info.dubai@aquametro.com

www.aquametro.ae